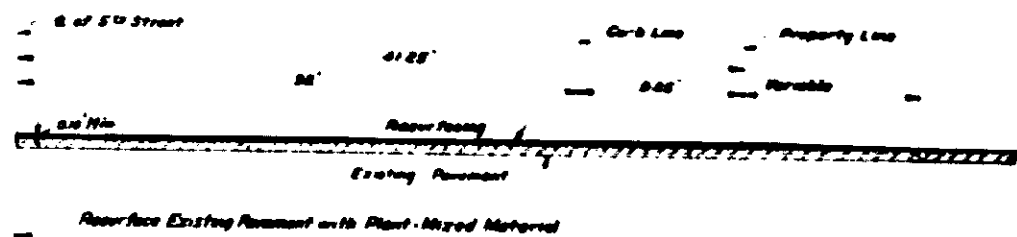
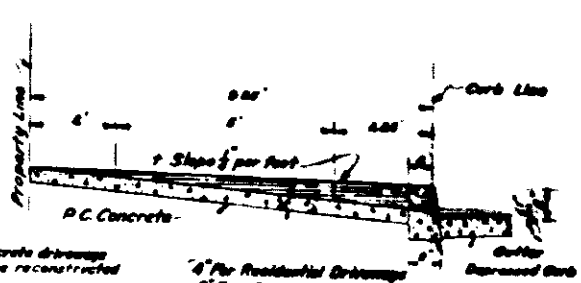


TYPICAL SECTION OF PAVEMENT
Scale - Horizontal 1/4" = 1'-0", Vertical 1/4" = 1'-0"

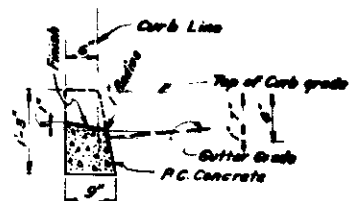


TYPICAL HALF SECTION OF PAVEMENT ON CENTER LINE OF INTERSECTING STREET.
Scale - Horizontal 1/4" = 1'-0", Vertical 1/4" = 1'-0"



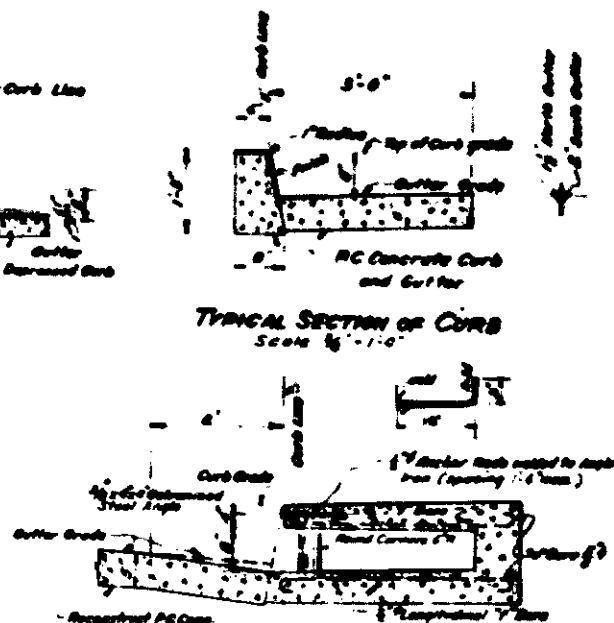
TYPICAL SECTION OF DRIVEWAYS
Scale 1/2" = 1'-0"

NOTE - All Existing P.C. Concrete driveways less than 12" wide shall be reconstructed 12" wide.
Commercial driveways are shown thus on Plan - concrete.
NOTE - Remove Existing sidewalk for 3' each side of driveway and reconstruct to new line and grade.



TYPICAL SECTION OF DEPRESSED CURB
Scale - 1/2" = 1'-0"
Depressed Curbs shall be constructed at all existing dirt driveways.

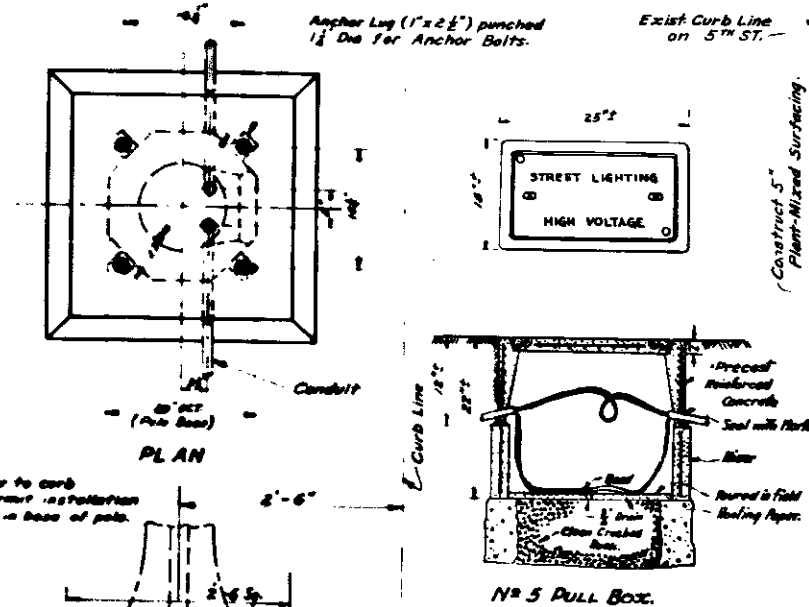
NOTE - A 1/2" Expansion Joint shall be constructed thru all curbs, gutters and sidewalks at locations shown on plans at Curb returns and at 60' intervals.
Depressed Curb shall be constructed at all existing dirt driveways.



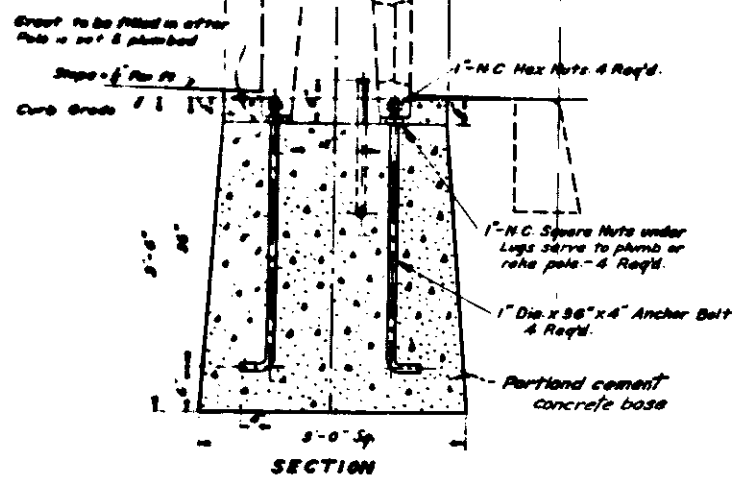
TYPICAL SECTION OF CURB
Scale 1/2" = 1'-0"

TYPICAL SECTION OF INLET OR OUTLET (Culvert Storm)
Scale 1/2" = 1'-0"

NOTE - Except as noted, top of Culvert within sidewalk area to conform to cross-section slope and finish of sidewalk.

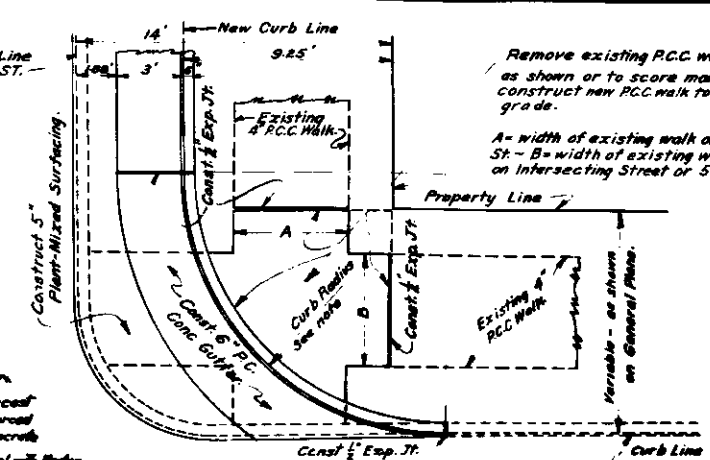


NOTES
1. Pole mounted with base to curb.
2. Conduit located to permit installation of 1/2" Transformer - Base of pole.



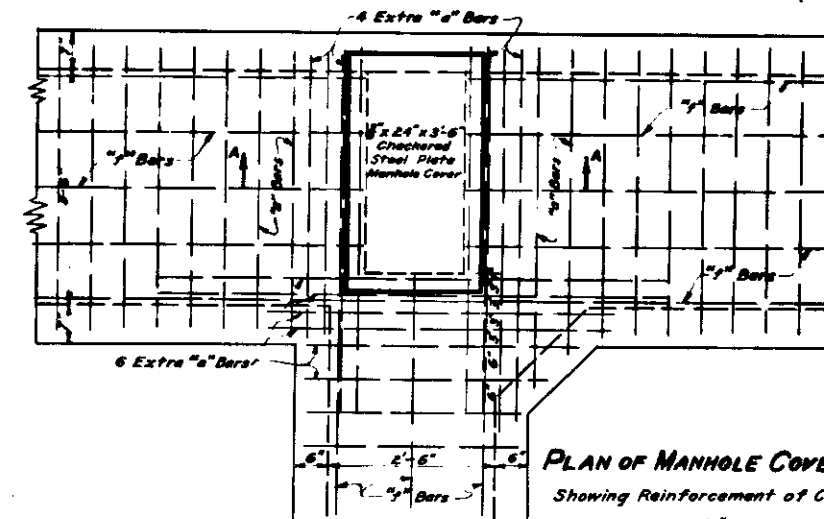
DETAIL OF ELECTROLIER FOUNDATION
Scale - 1" = 1'-0"

Note - P.C. Conc. base with Anchor bolts, nuts and conduit as shown, only, to be constructed under this contract.



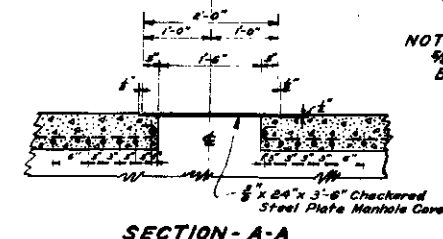
TYPICAL PLAN OF RETURN
Scale - 1/4" = 1'-0"

NOTE - All curb return radii shall be 12' except where otherwise noted on General Plan, or directed by City Engineer.



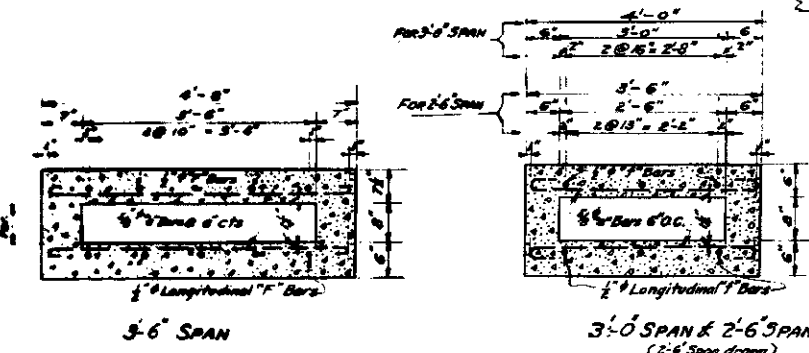
PLAN OF MANHOLE COVER-A
Showing Reinforcement of Culvert Top
Scale 3/4" = 1'-0"

NOTE - Extra "a" Bars shall be 3/8" Deformed Reinforcement Bars.



SECTION-A-A

R.D. Forsythe
R. D. FORSYTHE
City Engineer
Civil Engr. Cert. No. 3102



TYPICAL SECTIONS OF REINFORCED CONCRETE BOX CULVERTS
Scale - 3/4" = 1'-0"

DETAIL SHEET
PLAN # 1961
FIFTH STREET WIDENING
FROM "H" ST. TO "E" ST.
CITY OF SAN BERNARDINO CALIF.
STATE HIGHWAY ROUTE # 39
Sheet No. 5 of 5 Sheets (1951)